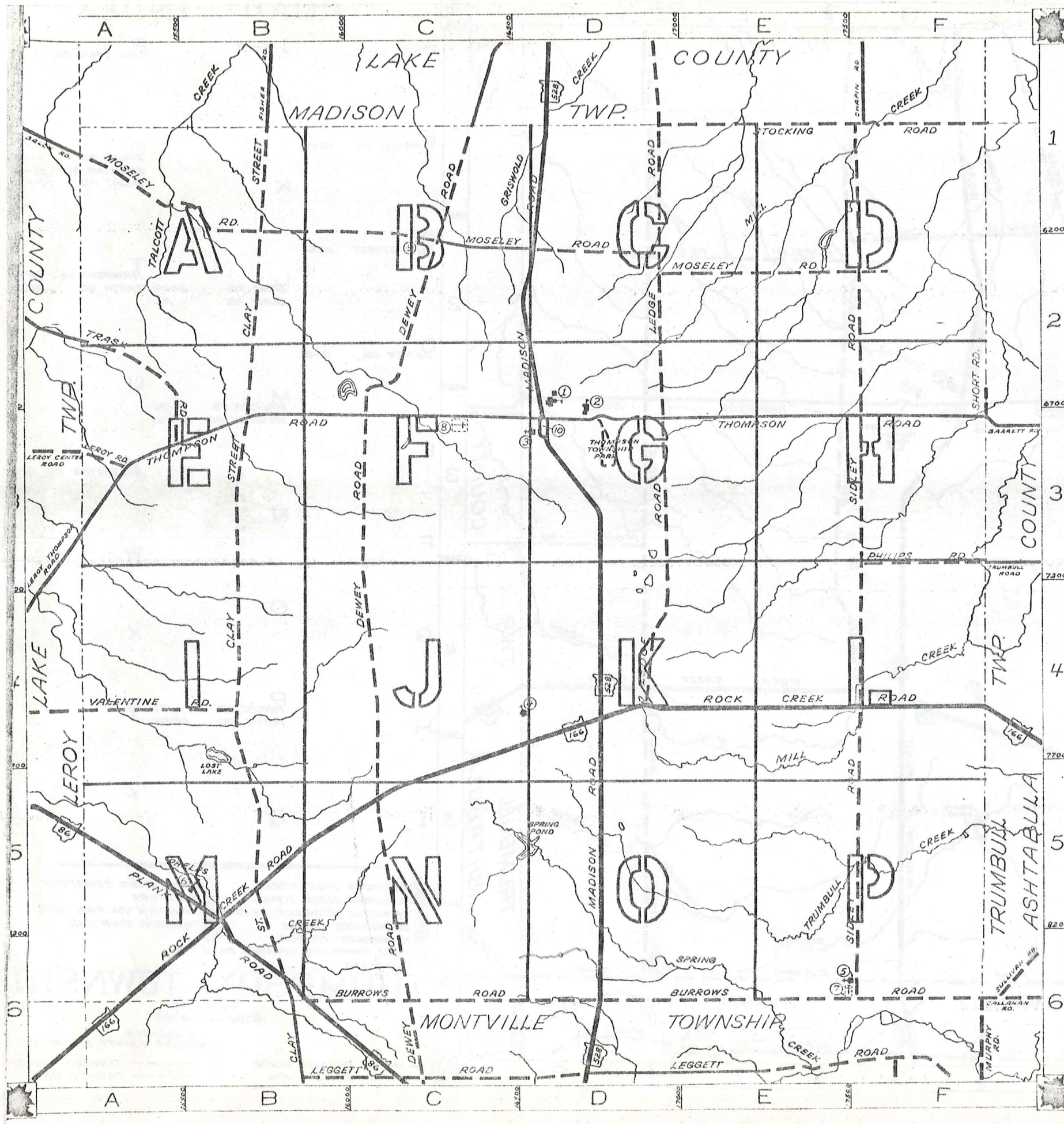


# ROAD INDEX



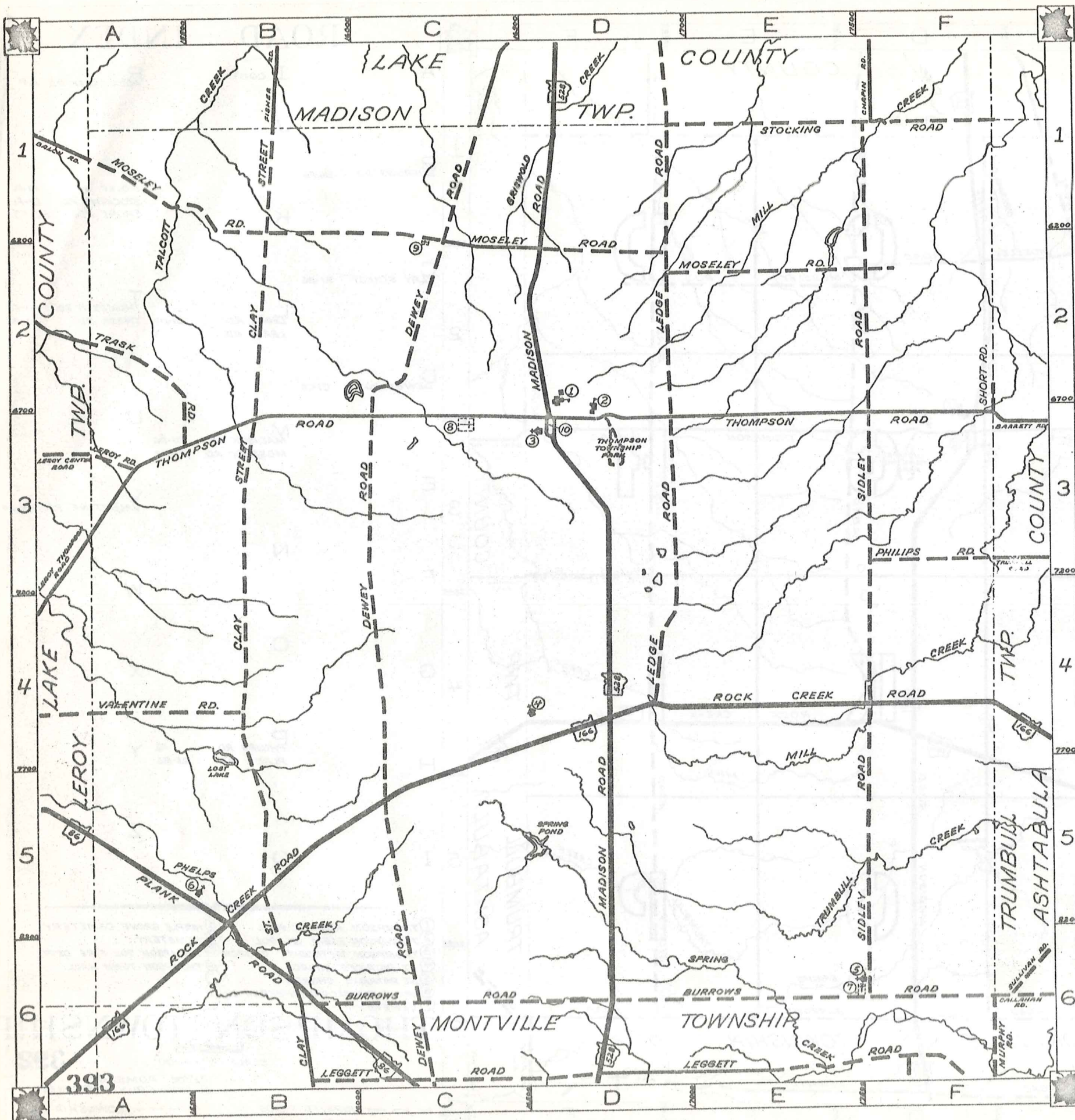
A	I cont.	R	ROCK CREEK RD. A6-F4	
J				
1	B	BURROWS RD. B6-F6	S	SIOLEY RD. F1-F6
			STOCKING RD. D1-F1	
			SHORT RD. F2-F3	
2	C	CLAY STREET B1-B6	T	THOMPSON RD. A3-F3
			TRASK RD. A2-A3	
	L	LEDGE RD. D1-D4		
		LEROY RD. A3		
3	D	DEWEY RD. C1-C6	U	
			M	MADISON RD. D1-D6
			MOSELEY RD. A1-F2	
4	E		V	VALENTINE RD. A4-B4
			N	
			W	
5	F		O	
			X	
			P	PHILIPS RD. F3
			PLANK RD. A5-B6	
6	G		Y	
			Z	
	H			
	I		Q	

- ① THOMPSON HIGH SCHOOL
- ② THOMPSON ELEM. SCHOOL
- ③ THOMPSON METHODIST CHURCH
- ④ ST. PATRICK'S CHURCH
- ⑤ ST. PATRICK'S CHURCH
- ⑥ GRACE EVANGELICAL LUTHERAN CH.
- ⑦ CEMETERY
- ⑧ MAPLE GROVE CEMETERY
- ⑨ CEMETERY
- ⑩ THOMPSON VOL. FIRE DEPT.
- ⑪ THOMPSON TOWN HALL

**THOMPSON TOWNSHIP**  
**392**  
 SCALE: 1"=2000'  
 CLYDE POMEROY  
 GEORGIA COUNTY ENGINEER

--- UNPAVED ROADS  
 --- PAVED ROADS  
 --- TOWNSHIP LINE  
 --- COUNTY LINE

# ROAD INDEX



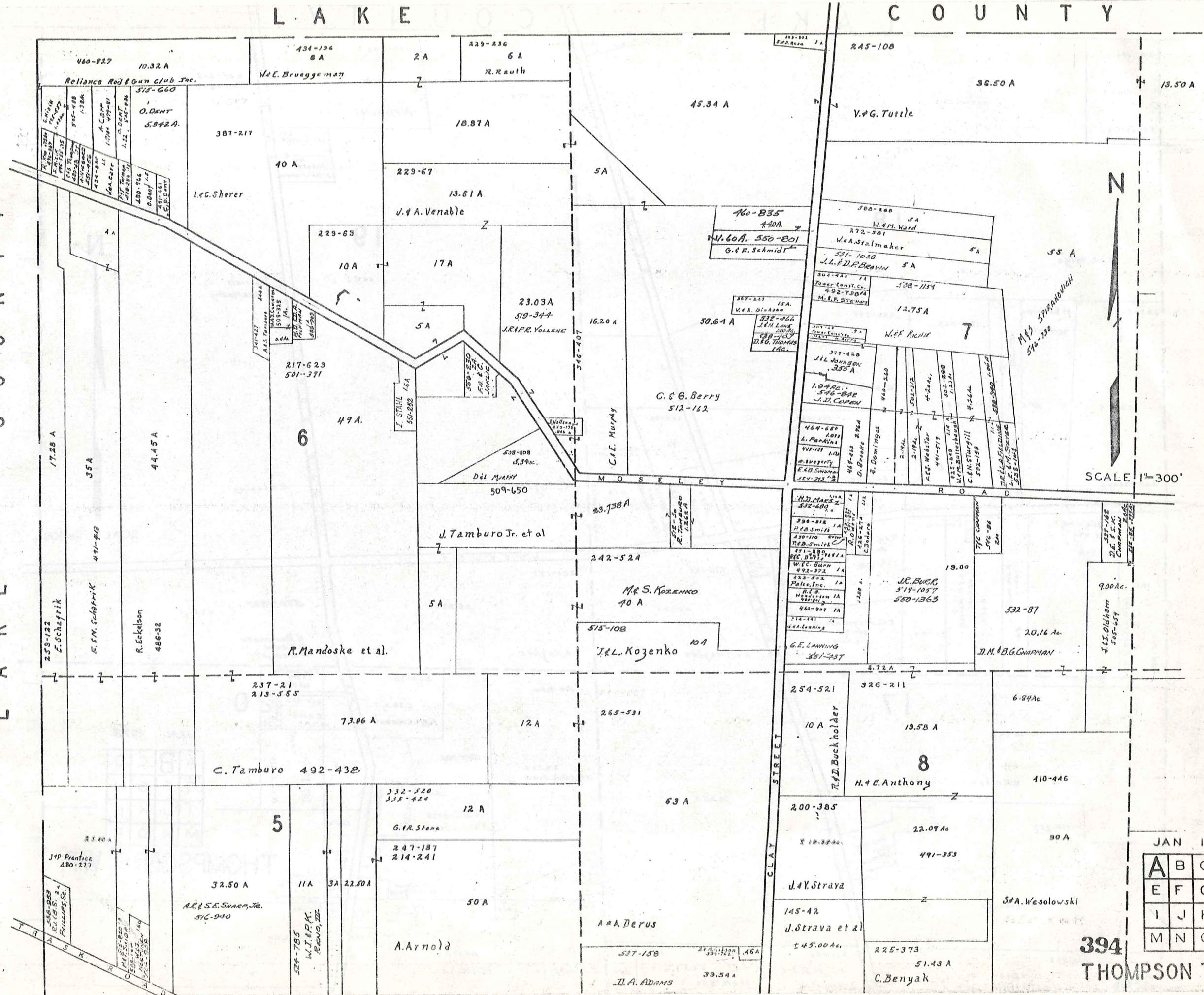
A	I cont.	R	ROCK CREEK RD. A6-F4
	J		
B	BURROWS RD. B6-F6	S	SIDLEY RD. F1-F6 STOCKING RD. D1-F1 SHORT RD. F2-F3
	K		
C	CLAY STREET B1-B6	T	THOMPSON RD. A3-F3 TRASK RD. A2-A3
	L		
D	DEWEY RD. C1-C6	U	
	M		
E	MADISON RD. D1-D6 MOSELEY RD. A1-F2	V	VALENTINE RD. A4-B4
	N		
F		W	
	O		
G		X	
	P		
H	PHILIPS RD. F3 PLANK RD. A5-B6	Y	
	Q		
I		Z	

① THOMPSON HIGH SCHOOL      ⑧ MAPLE GROVE CEMETERY  
 ② THOMPSON ELEM. SCHOOL    ⑨ CEMETERY  
 ③ THOMPSON METHODIST CHURCH ⑩ THOMPSON VOL. FIRE DEPT.  
 ④ ST. PATRICK'S CHURCH      ⑪ THOMPSON TOWN HALL  
 ⑤ ST. PATRICK'S CHURCH  
 ⑥ GRACE EVANGELICAL LUTHERAN CH.  
 ⑦ CEMETERY

**THOMPSON TOWNSHIP**  
 SCALE: 1" = 2000'  
 O.J. ROBINSON  
 GEAUGA COUNTY ENGINEER

- - - - UNPAVED ROADS      - - - - TOWNSHIP LINE  
 = = = = PAVED ROADS      - - - - COUNTY LINE

L A K E  
C O U N T Y

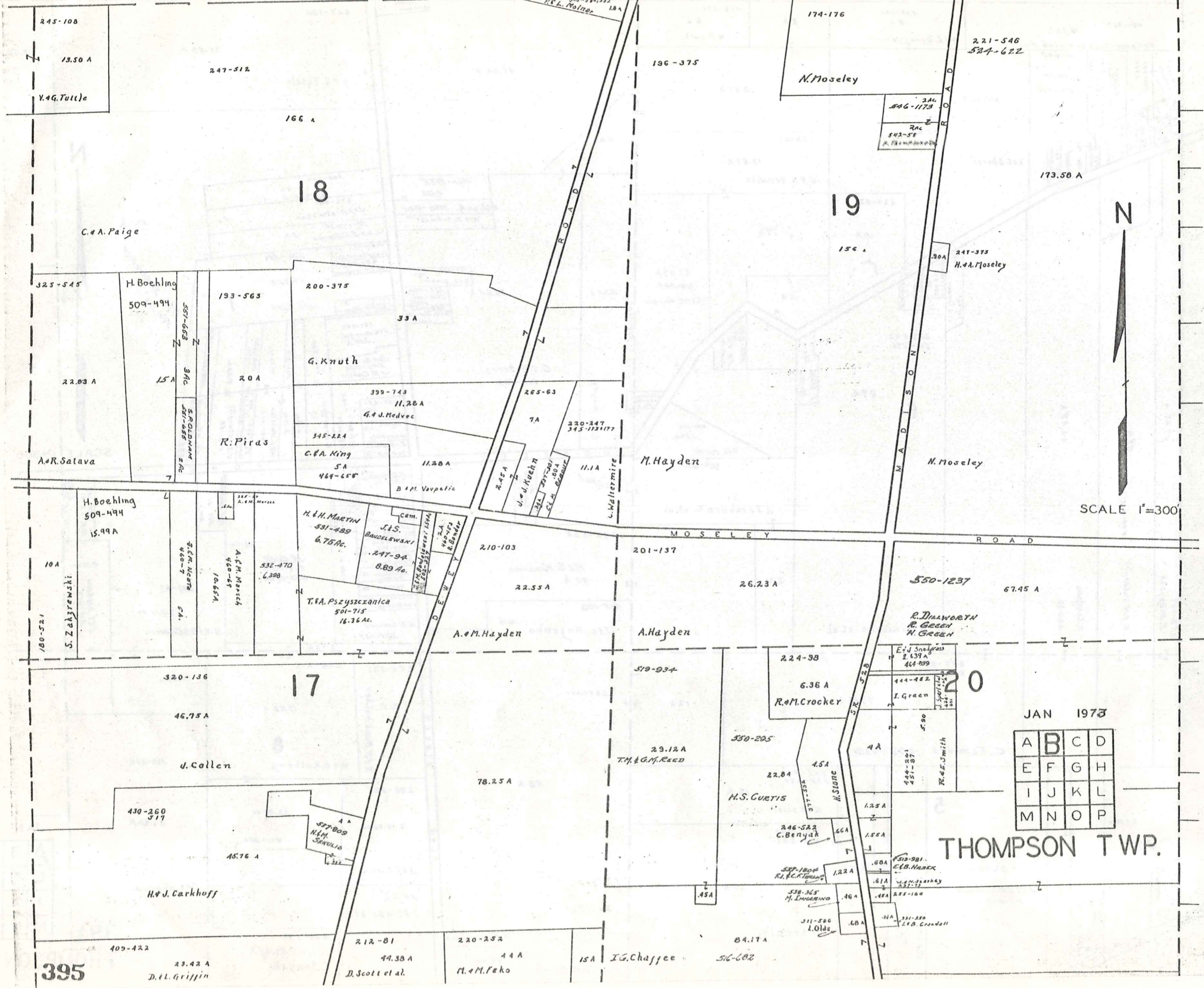


JAN 1975

A	B	C	D
E	F	G	H
I	J	K	L
M	N	O	P

394  
THOMPSON TWP.

L A K E C O U N T Y



SCALE 1"=300'

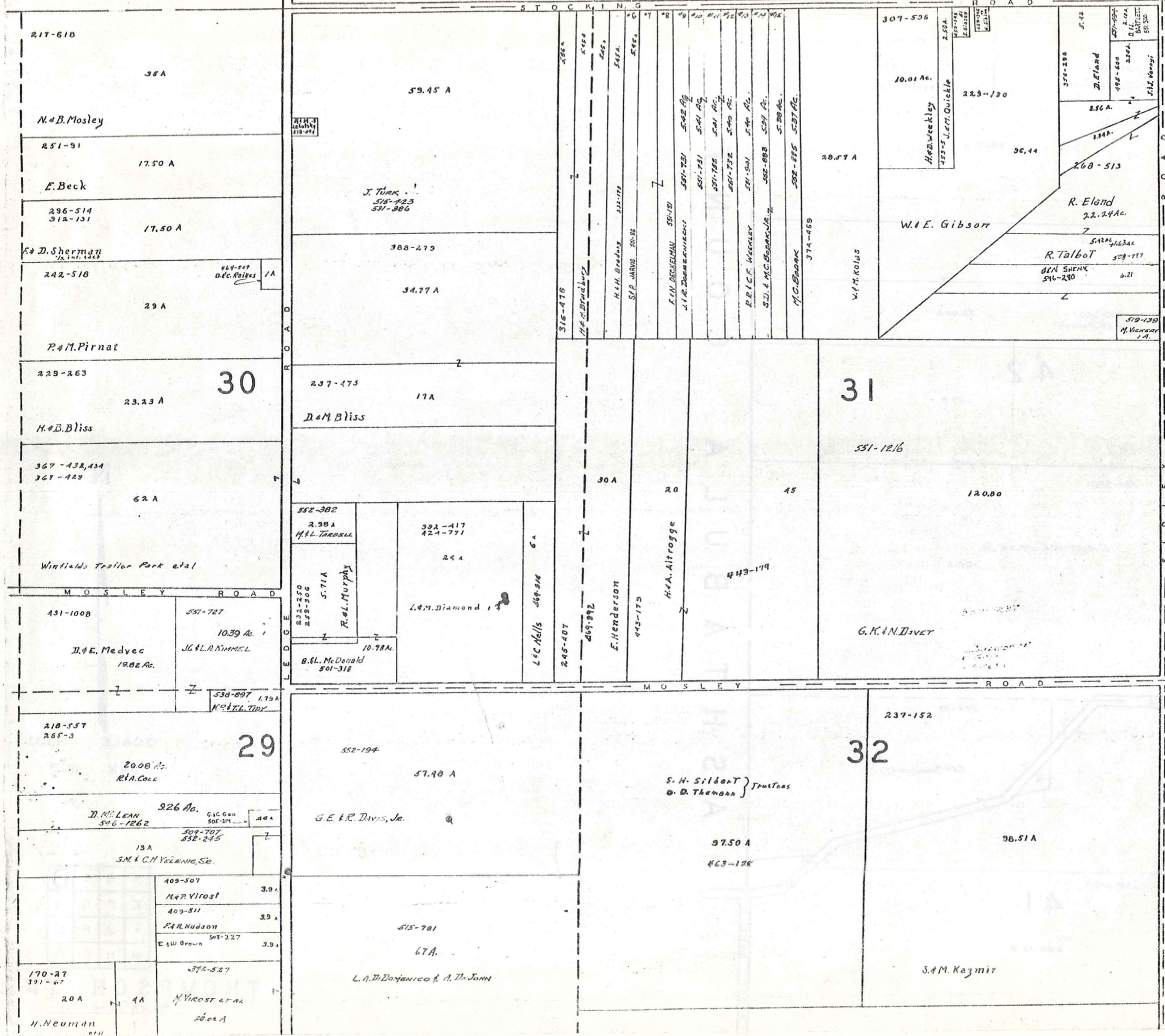
JAN 1973

A	B	C	D
E	F	G	H
I	J	K	L
M	N	O	P

THOMPSON TWP.

395

L A K E C O U N T Y



SCALE 1" = 300'  
JAN 1973

A	B	C	D
E	F	G	H
I	J	K	L
M	N	O	P

THOMPSON TWP

A S H T A B U L A C O U N T Y

515-068  
R.M. HICKERSON

399-103  
25 A  
C. Barkwill

62.15 A

508-603  
D. & A. Hauser

50.04 A

42

50 A

538-955

CHRISTIAN CAMPING, INC.

100 A

542-95

40 A  
E. R. MORGANSTERN

60 A

255-350

41

264.13 A

SHORT ROAD

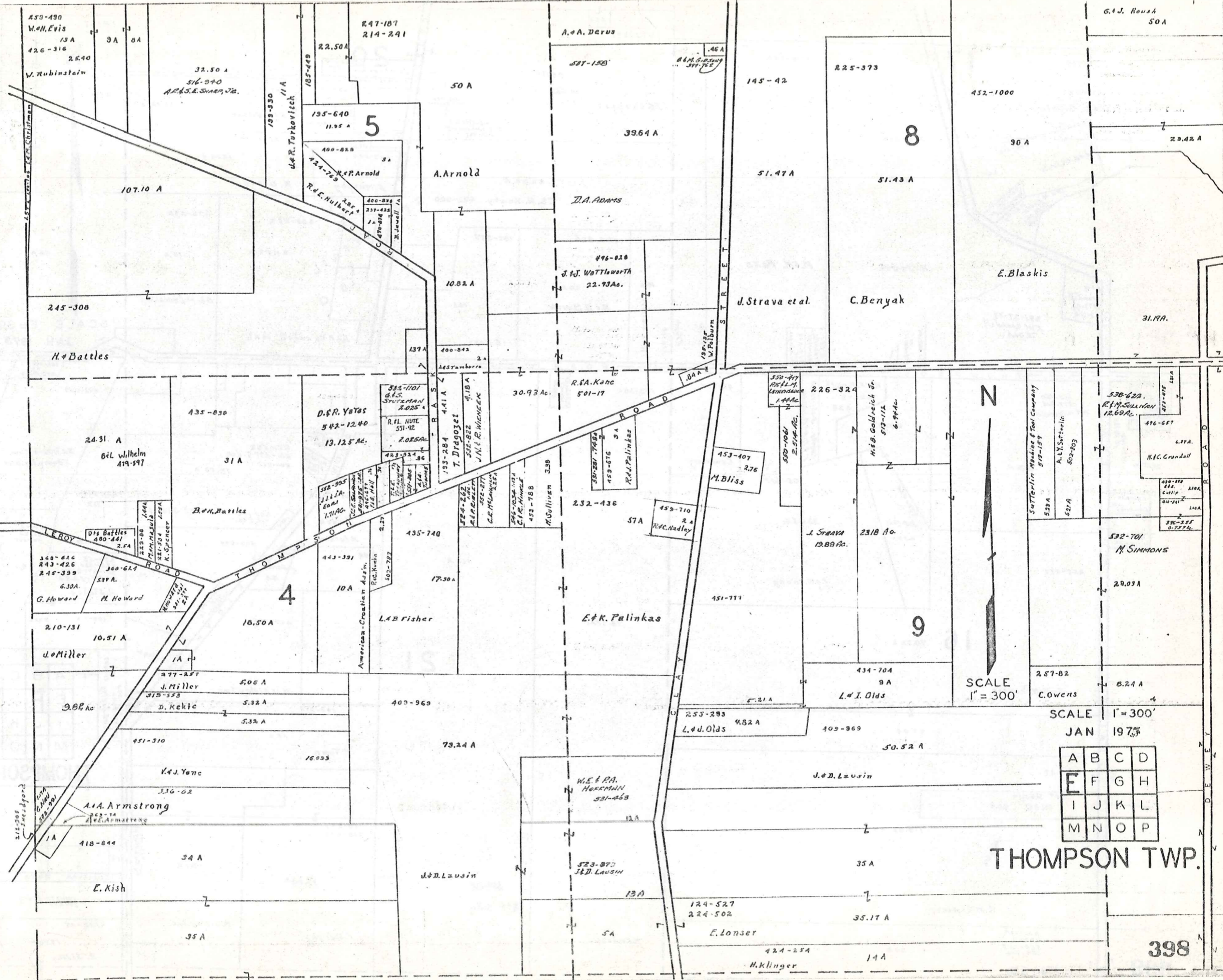


SCALE 1" = 300'  
JAN 1973

A	B	C	D
E	F	G	H
I	J	K	L
M	N	O	P

THOMPSON TWP.  
Match Line

L A K E C O U N T Y



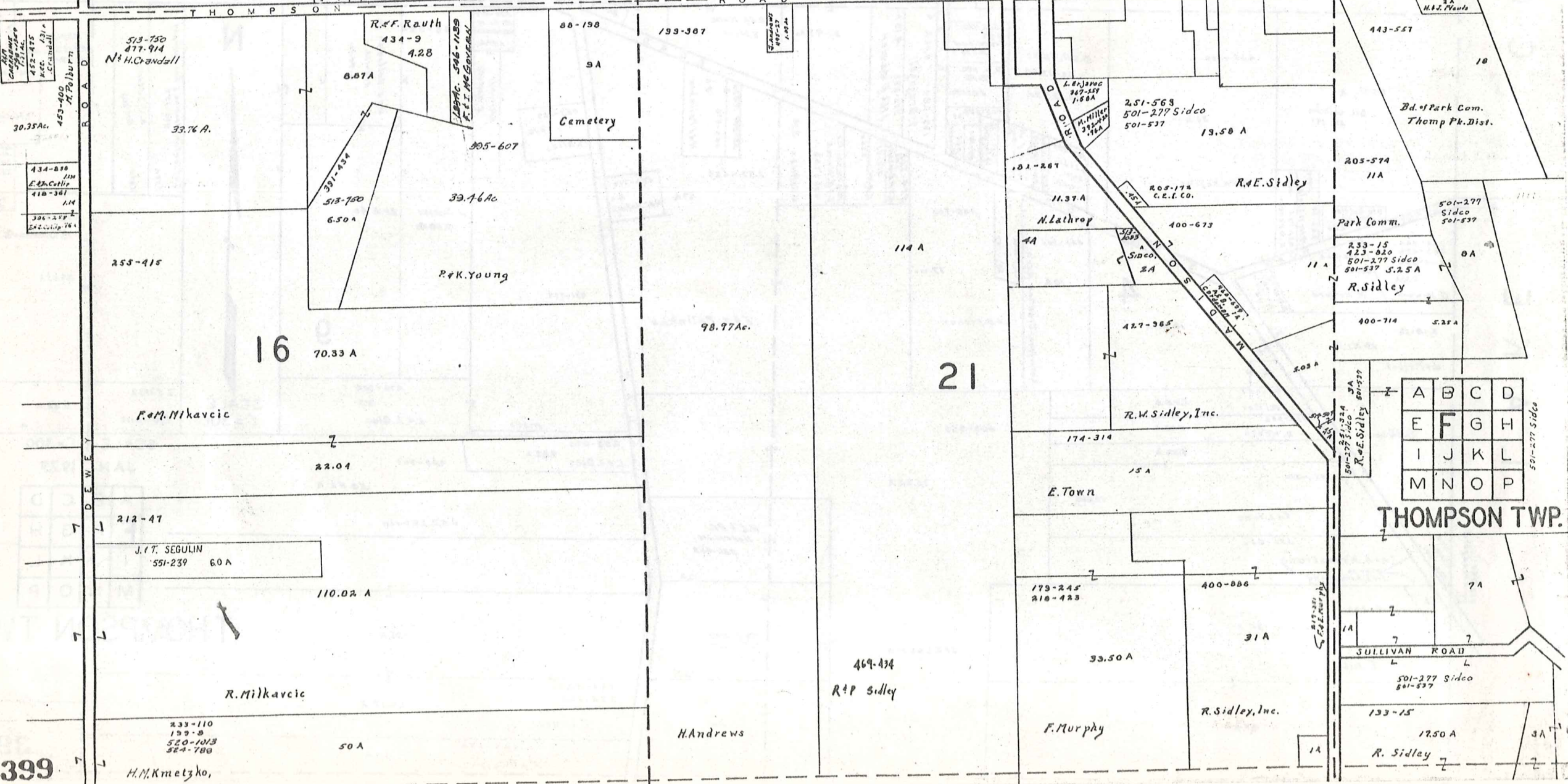
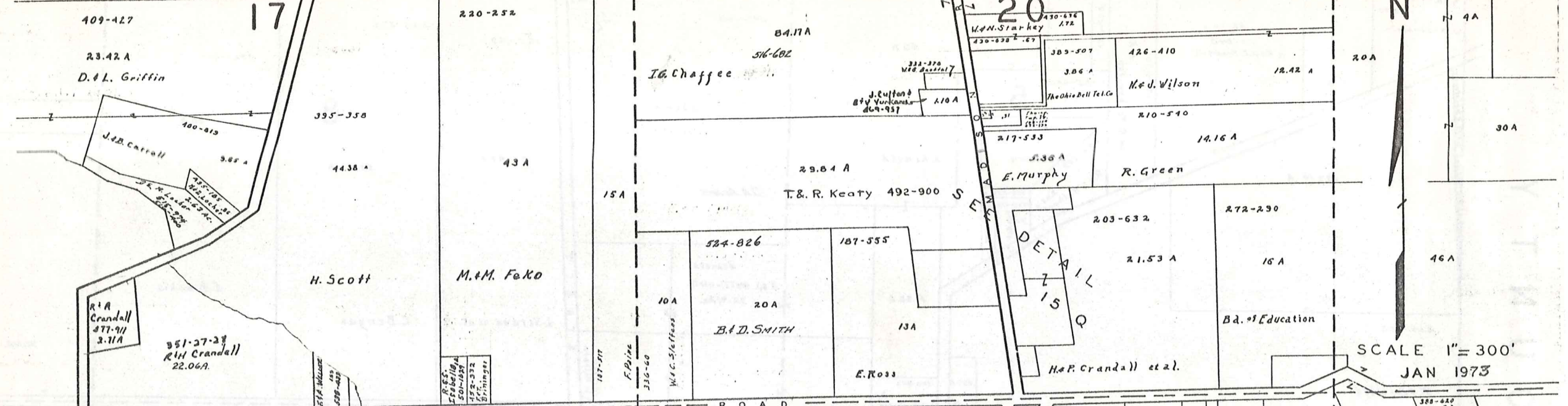
SCALE 1" = 300'

SCALE 1" = 300'  
JAN 1973

A	B	C	D
E	F	G	H
I	J	K	L
M	N	O	P

THOMPSON TWP.

G.W. Roush



372-527  
 M. Virost et al  
 R. O. Kramer  
 4.28 A  
 430-324  
 30A  
 A. M. Albert  
 537-1232  
 46 A  
 QUIET AIR INC.

515-567  
 67A  
 572-1221  
 J. Jarvis & R. Zentgraf  
 29  
 519-493  
 F. O. Vantaggi  
 5/8 A  
 426-235  
 5.99 A  
 W. Powers  
 159-19  
 2A  
 J. Brenwald  
 24.81 A  
 21.5 A  
 A. E. A. Gustafson  
 491-283

331-500  
 97.50 A  
 S. H. Deutsch  
 322-382  
 322-384  
 A. M. Mosely  
 30 A  
 50 A

237-152  
 38.51 A  
 S. M. Kazmir  
 20 A  
 444-28  
 10.  
 P. Molan  
 542-802  
 8 A  
 F. J. SUNDLER

232-566  
 18 A  
 20 A  
 J. & D. Frame  
 423-820  
 6 A  
 R. Sidley  
 520-608  
 A. Witt et al  
 29.34 A  
 271-481  
 2A  
 REG. HALL  
 516-218  
 135  
 F. O. Vantaggi  
 451-500  
 133  
 A. M. Speltz  
 500-790  
 10.75 A  
 R. Sidley  
 423-820  
 501-277 Sidco  
 501-537  
 10.75 A  
 R. Sidley  
 520-822  
 J. B. Borden  
 501-277  
 Sidco  
 501-537  
 10.22 A  
 17.50 A

THOMPSON ROAD  
 247-682  
 49 A  
 S. Lanka  
 550-252  
 34.96 A  
 H. A. & R. Stewart  
 28  
 519-493  
 M. M. Bell  
 10 A  
 25.42 A  
 E. Zehe 417-827 2.5 A  
 212-627  
 37.95 A  
 G. M. Medvic  
 506-1123  
 33.26 A  
 J. G. O'Fell et al.  
 C. Bush  
 464-858  
 20.70 A  
 H. Bones Jr.  
 495-339

153-520  
 40 A  
 George Hidden Valley Country Club  
 60 A  
 425-831  
 33  
 I. Martin  
 D. H. Wike  
 210-258  
 377-453  
 40 A  
 F. Zehe  
 37.95 A  
 210-258  
 377-453  
 40 A  
 F. Zehe  
 37.95 A  
 303-54  
 36.70 A  
 B. Burba et al.

206-135  
 25 A  
 247-218  
 74.50 A  
 J. Binnig  
 335-485  
 50 A  
 C. M. Dawson  
 72.75 A  
 303-56  
 J. J. Burba  
 .85 A

PHILLIPS ROAD

SCALE 1" = 300'

JAN 1973

A	B	C	D
E	F	G	H
I	J	K	L
M	N	N	P

THOMPSON TWP

400

Match Line

Match Line

41

C O U N T Y

A S H T A B U L A

445-205  
4 A  
L. HUN

253.55 A

447-205, 207, 208  
3 A

501-512 3A

552-97

J.N. KONRBAUSH

7576-92  
255-359

K.E. & R.W. KANGAS

THOMPSON ROAD

205-92

± 20 A

R.R. Beyerle

A. Stone

492-909

292-570

50 A

50 A

75 A

L. Davis

L.A. Schaeffer

505-968

40

373-77 1 A

300-90 2 A

4 A

M. Harlach

341-478

15 A

L. C. Klingensmith

124 A

20 A

492-642

5A

424-912

A. Rankel

J. Ornstein & F. S. Lughton

3A

401

PHILIPS ROAD



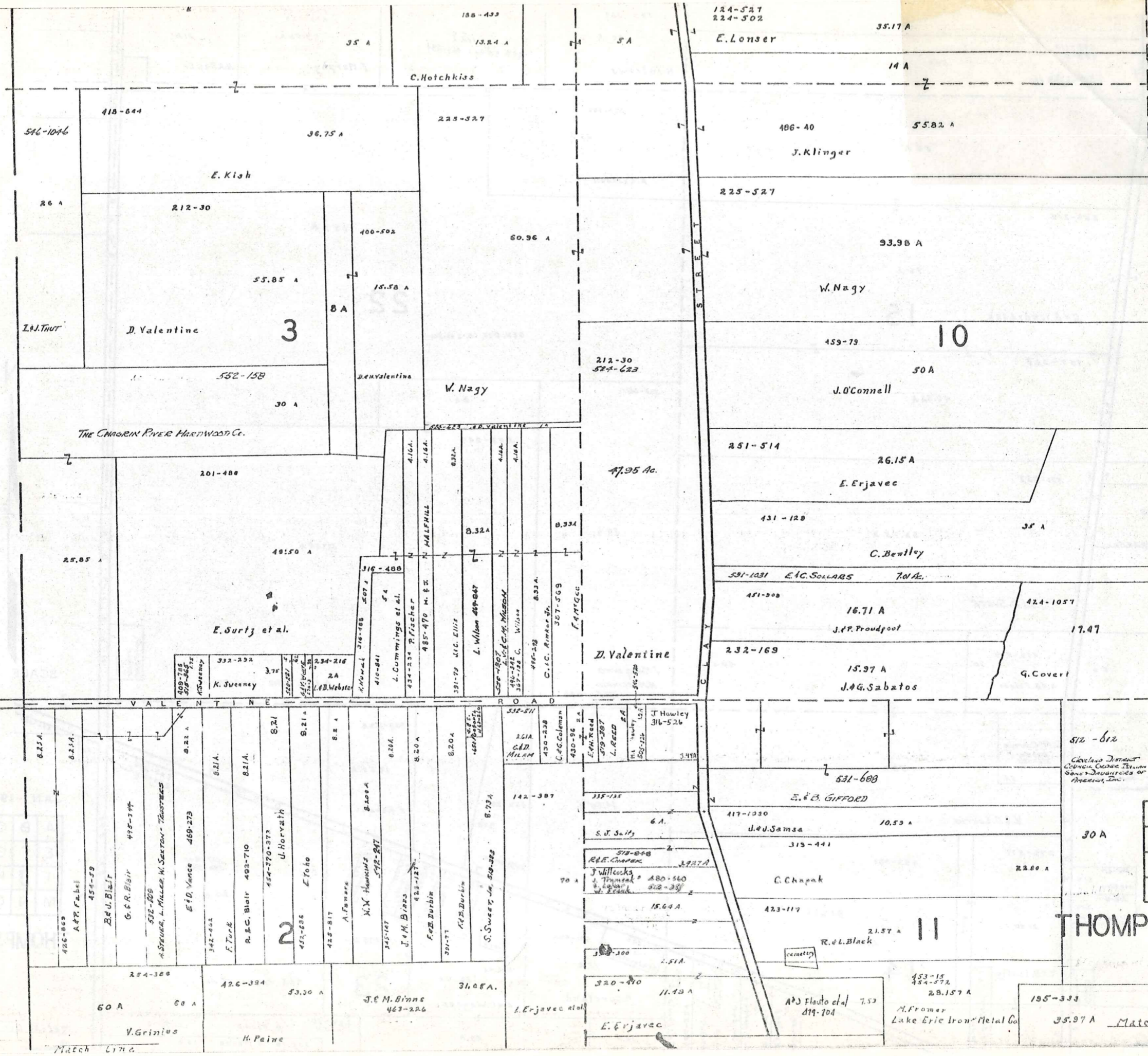
SCALE 1" = 300'

JAN 1973

A	B	C	D
E	F	G	H
I	J	K	L
M	N	O	P

THOMPSON TWP.

L A K E C O U N T Y



SCALE 1" = 300'

A	B	C	D
E	F	G	H
I	J	K	L
M	N	O	P

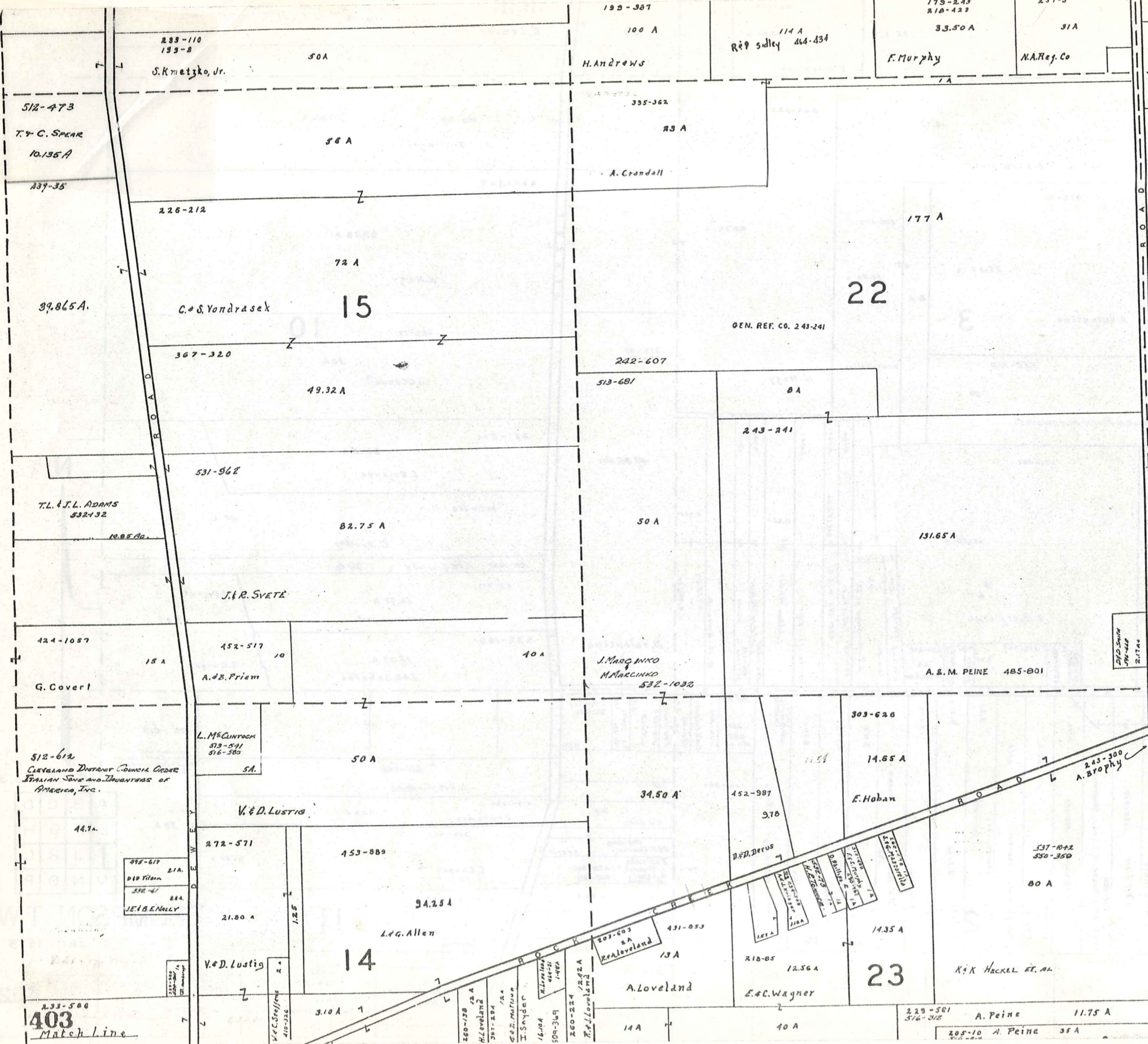
THOMPSON TWP

JAN 1973

402

Match Line

Match Line



SCALE 1" = 300'

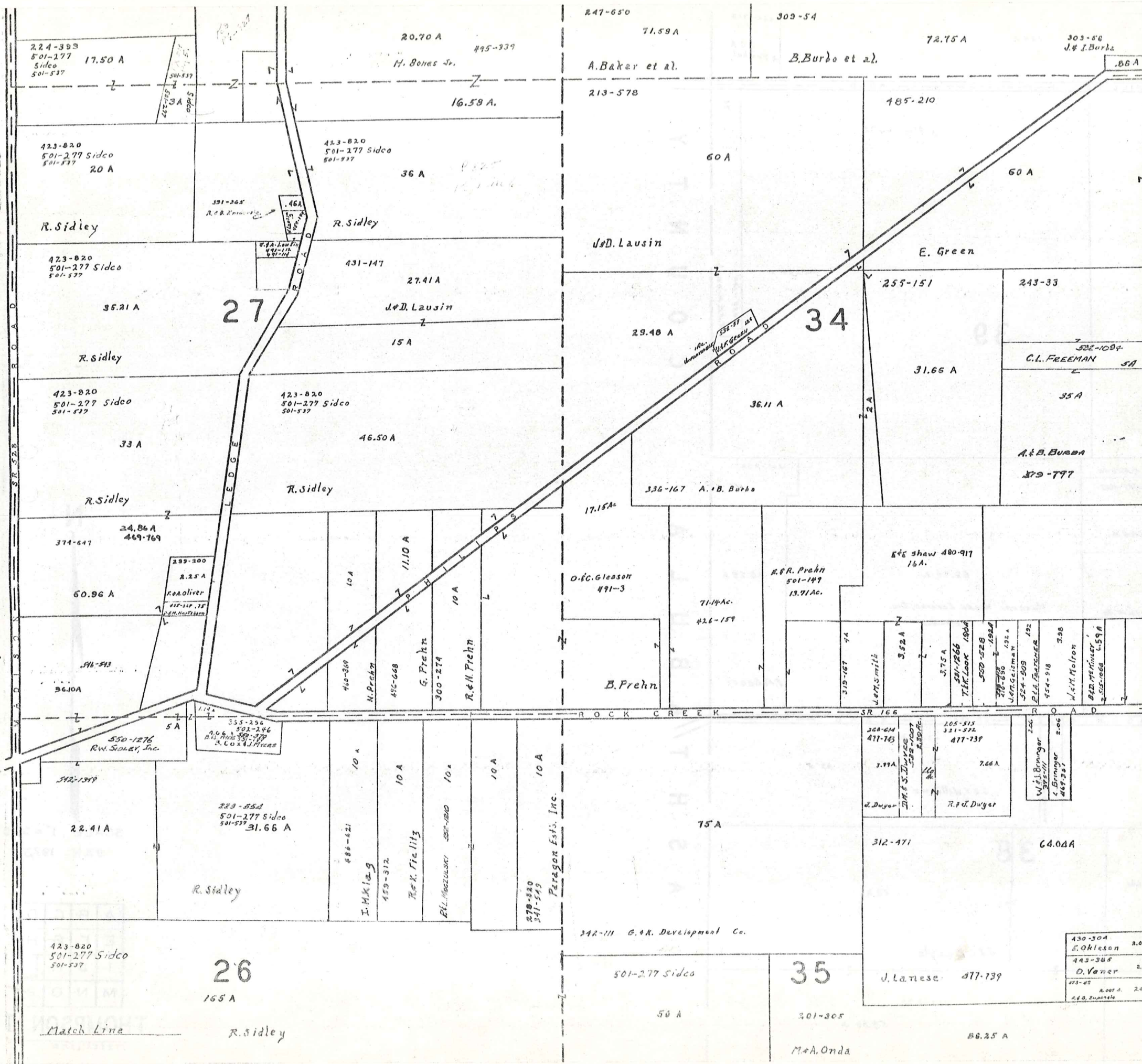
JAN 1973

A	B	C	D
E	F	G	H
I	J	K	L
M	N	O	P

THOMPSON TWP

Match Line

403  
Match Line



SCALE 1" = 300'

JAN 1973

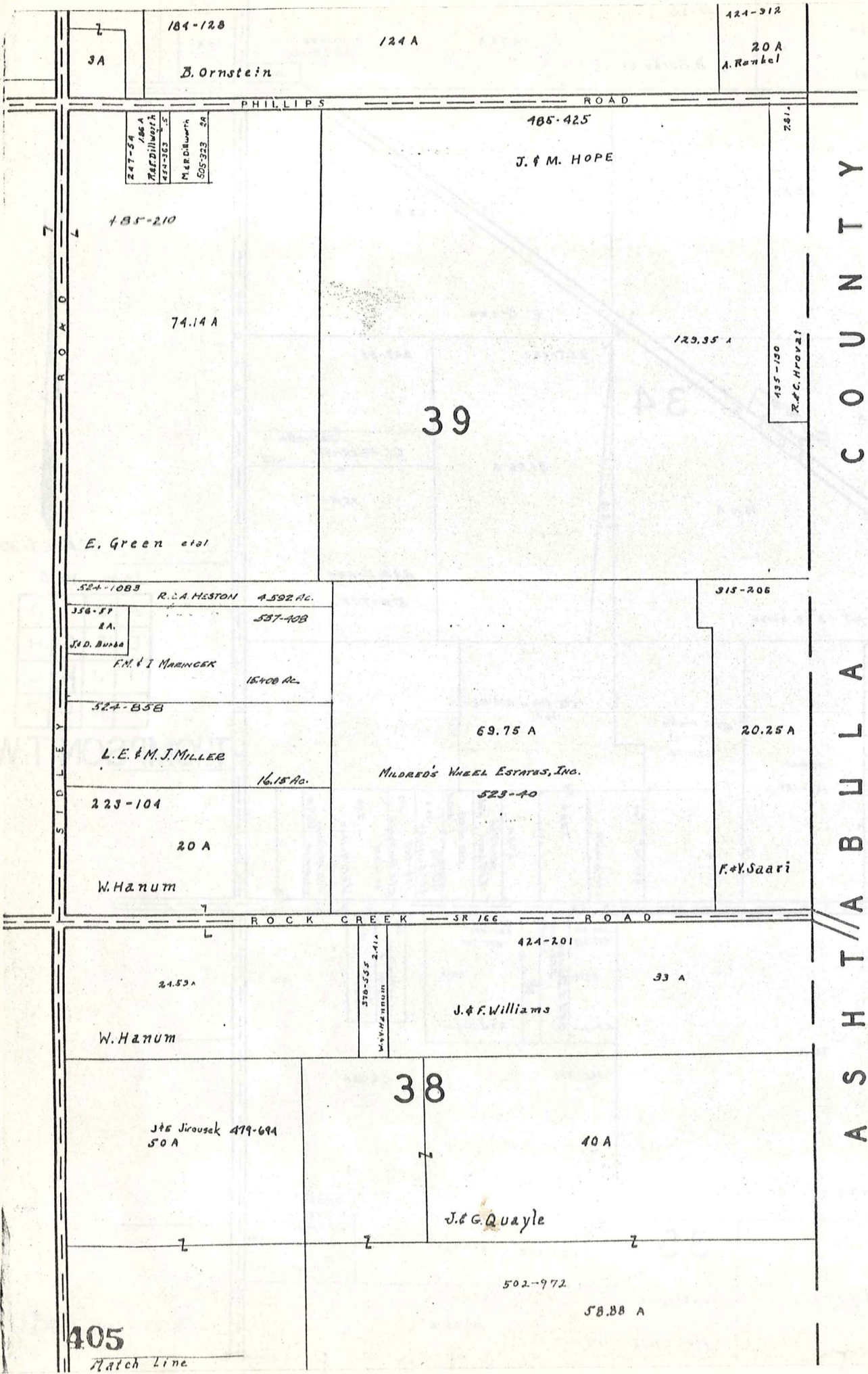
A	B	C	D
E	F	G	H
I	J	K	L
M	N	O	P

THOMPSON TWP.

Match Line

Match Line

404



ASH T/A BULLA COUNTY



SCALE 1" = 300'  
JAN 1973

A	B	C	D
E	F	G	H
I	J	K	L
M	N	O	P

THOMPSON TWP.  
Match Line

405  
Match Line

L A K E C O U N T Y

Match Line

Match Line

254-386

60 A

V. Grinius

2

54.27 A

S.E. 1/4 Ann Decker  
550-930

212-604

C. Grinius

37 A

142-387

J.M. Binns  
463-226

320-410

E. Erjavec  
11.40 A

551-1276

M.E. Aexo  
11 A

70 A

L. Erjavec et al.

145-103

20 A

30 A

200-103  
233-87 263-244

W. Supniewski

195-333

35.97 A

L. Hosta

188-69  
233-300

16.36 A

M. Lustik et al.

303-34  
351-371

35 A

Vitantonio  
Inc.

CITIZENS SAVINGS & LOAN CO.  
551-219

60.72 A

243-191  
2.50 A

291-602

31.23 A

L. Lawrence

281-322  
8.77 A  
Evangelical  
Church

230-338  
SA  
Remderrell

221-291

21 A

H.P. Lawrence

4.32 A

15 A

91.50 A

C. Grinius

224-119

17 A

J. Janu

453-559  
460-277

P.E. Pudimat

12.30 A

299-35

J.B. Janu

18.63  
C. Walters

32.14 A

J. Corrigan

445-20  
233-54  
J. Corrigan

224-276

424-887

226-523

31.44 A

A. Nemeth

495-958  
4.2B  
J. Stand Jr.

F. Zivoder et al.

Topl. Susman  
251-326  
1.74 A

9.07 A

A.P. Nells

220-427

J.A. Magyar

221-117

21.40 A

F. Zivoder et al.

459-15  
454-572

29.157 A  
M. Fromer  
Lake Erie Iron  
& Metal Co.



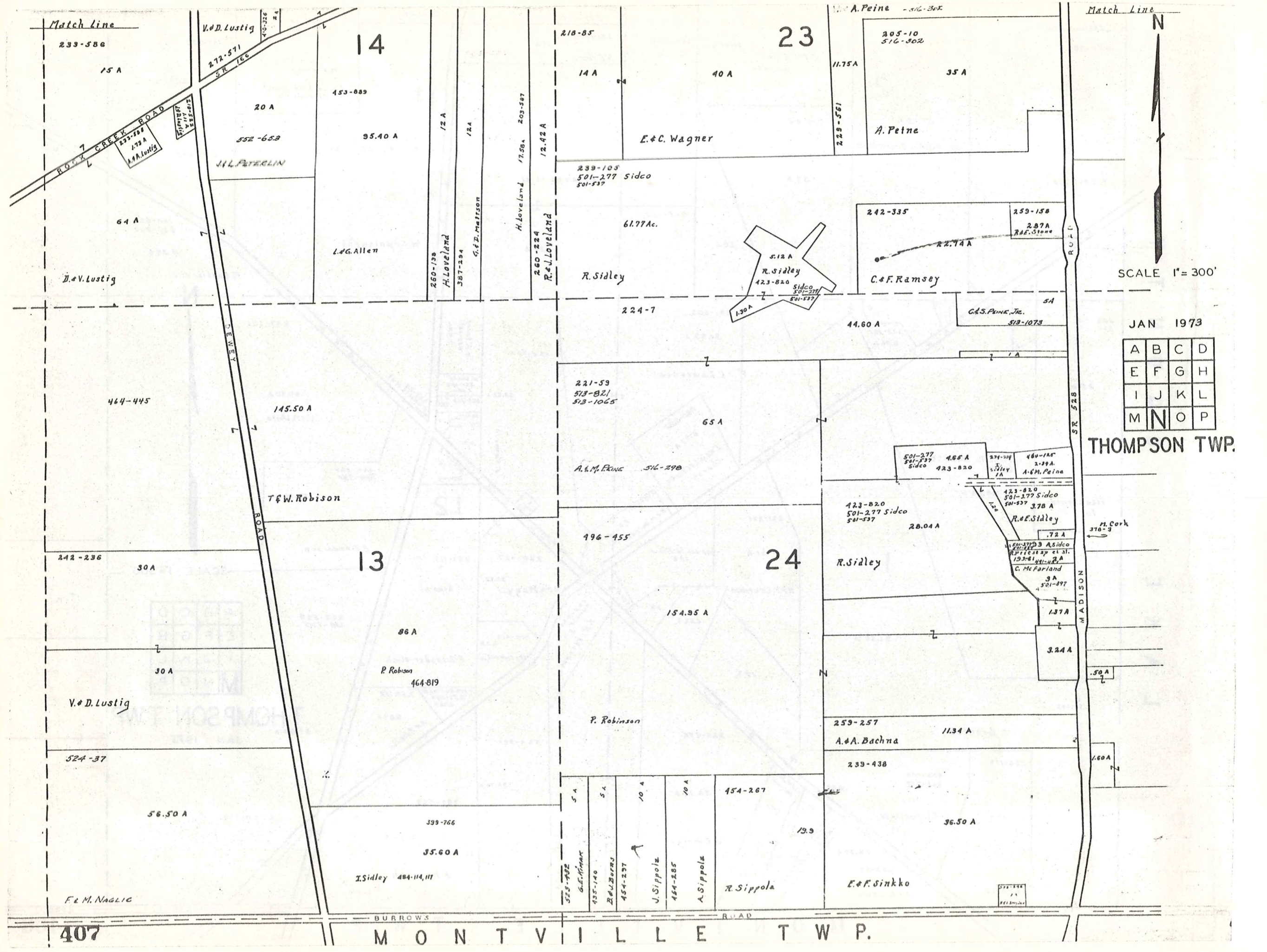
SCALE 1" = 300'

A	B	C	D
E	F	G	H
I	J	K	L
M	N	O	P

THOMPSON TWP.

97.88 A  
JAN 1973

M O N T V I L L E T W P.



Match Line

N

SCALE 1" = 300'

JAN 1973

A	B	C	D
E	F	G	H
I	J	K	L
M	N	O	P

THOMPSON TWP.

407

MONTVILLE TWP.

Match Line

Match Line

26

35

38

423-820  
501-277 Sidco  
501-537

501-277 Sidco  
501-537

86.25 A

165 A

50 A

R. Sidley

M. Onda et al.  
520-833  
532-366

196-77

49.83 A

205-275

M. Sidley

90 A

242-77

49.83

L. Ramsey et al.

T. H. O'Ricki

218-611

254-437

S. SEYMOUR - 546-875 5.77 A.

94 A

8.65 A

454-142

16.35 A

Kennemetal Rod & Gun Club

300-143

A. N. Demukaitis

9.62 A

403-1003

C. M. Schreiber

9.62 A

231-281 232-116 L. Goudy et al. 5.78 A

131.67 A

M. J. Guditas

224-6  
234-169

26.30 A

F. Barnum et al.

224-5

60.92 A

251-95

25.50 A

36

20 A

427-814

326-37 235 A  
B. Turner  
374-87 2 A  
848 Turner  
.50 A

424-583

47.06 A

25

189-439

74.59 A

W. ANDERSON

356-318 5 A

35 A

106.50 A

B. & B. Turner

38.46 A B & B Turner 480-4

W. Gurich et al.

M. B. DRIVENZO  
580-1241  
20.00 AC.

14 A

F. & J. Yelcho

14.50 A

126-145  
126-146  
126-147

126-148  
126-149  
126-150

126-151  
126-152  
126-153

239-440 5 A  
G. Kimak

W. M. BOWEN

126-154  
126-155  
126-156  
126-157  
126-158  
126-159  
126-160  
126-161  
126-162  
126-163  
126-164  
126-165  
126-166  
126-167  
126-168  
126-169  
126-170  
126-171  
126-172  
126-173  
126-174  
126-175  
126-176  
126-177  
126-178  
126-179  
126-180  
126-181  
126-182  
126-183  
126-184  
126-185  
126-186  
126-187  
126-188  
126-189  
126-190  
126-191  
126-192  
126-193  
126-194  
126-195  
126-196  
126-197  
126-198  
126-199  
126-200



SCALE 1" = 300'  
JAN 1978

A	B	C	D
E	F	G	H
I	J	K	L
M	N	O	P

THOMPSON TWP

MONTVILLE TOWNSHIP

408

Match Line

Match Line

A  
S  
H  
T  
A  
B  
U  
L  
A  
C  
O  
U  
N  
T  
Y

38

68.88 A

J. Stocker

7

136-77

50 A

M. Sidley

50 A

J. Stocker

25 A

69.25 A

257-418

5.75 A

E. Stocker

110 A

37

J. Stocker

14.33 A

87.37 A

U.S. Auto Raceways, Inc.  
587-1830

451-1183  
SIS  
EISENHART  
228 AC

491-654

5.96 AC

476-157

492-272

15.59 A

6.942 A  
J. Brazofsky

518-688

M. Smialek

H.A. HOUSER 36.88 Ac.

425-955  
9.125 A

J. Brazofsky

BURROWS ROAD

409 MONTVILLE TWP.



JAN 1973

SCALE 1" = 300'

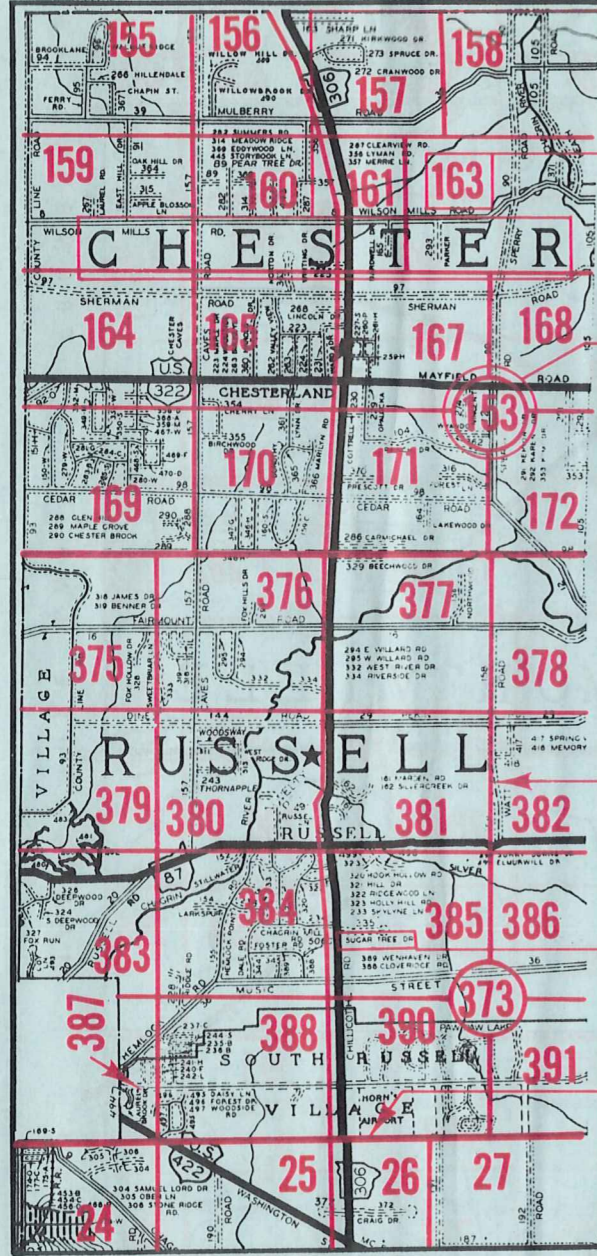
A	B	C	D
E	F	G	H
I	J	K	L
M	N	O	P

THOMPSON TWP.



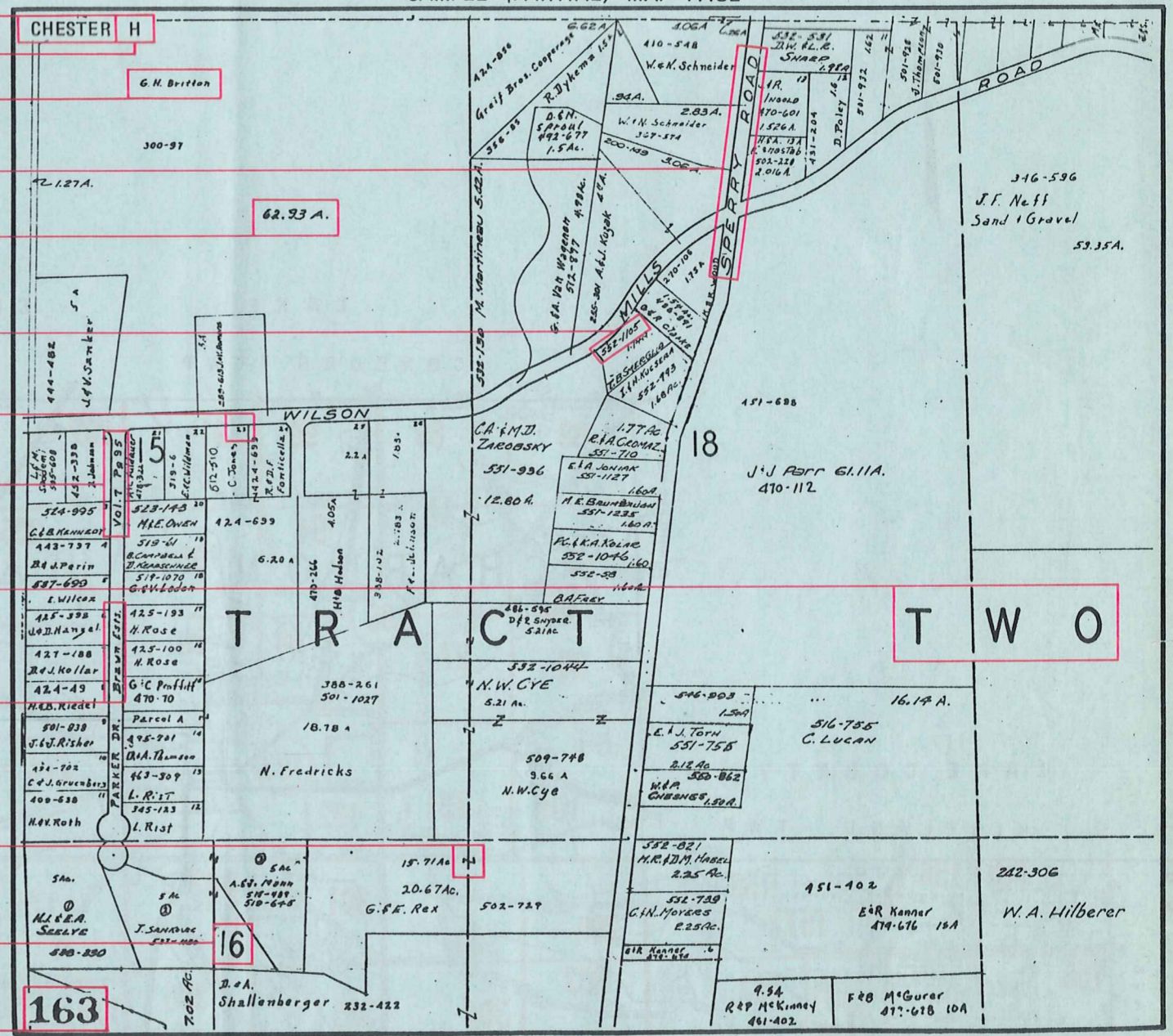
# Explanation and Use Sheet for Geauga County, Ohio

SAMPLE (PARTIAL) COUNTY INDEX MAP



- Township Name
- Map Page Number (Or Letter)
- Owners Name
- Street Name
- Acreage
- Municipality Index Beginning Atlas Page Number
- Deed Book & Page
- Subdivision Lot Number
- Plat Book & Page
- Tract Number
- Atlas Page Boundary
- Subdivision Name
- Street Name
- Denotes Continuous Ownership
- Municipality Index Atlas Page Boundary
- Tract Lot Number
- Atlas Page Number

SAMPLE (PARTIAL) MAP PAGE



## USE OF THE MAP VOLUME

1. LOCATE THE GENERAL AREA OF INTEREST ON THE COUNTY INDEX MAP, ATLAS PAGE 'B'.
2. A. IF PROPERTY IS IN A TOWNSHIP, NOTE THE ATLAS PAGE NUMBER. TURN TO THE PAGE INDICATED AND LOCATE SPECIFIC PARCEL OF INTEREST.
  - NOTE: ON SOME MAPS YOU MAY BE REFERRED TO A DETAIL SHEET SHOWING AN ENLARGEMENT OF THE AREA. THESE MAPS ARE FOUND AT THE END OF THE REGULAR MAP PAGES IN EACH TOWNSHIP EITHER IN ALPHABETICAL OR NUMERICAL SEQUENCE.
- B. IF PROPERTY IS IN A MUNICIPALITY, REFER TO THE TABLE OF CONTENTS, ATLAS PAGE 'C', AND NOTE THE BEGINNING ATLAS PAGE NUMBER FOR THE MUNICIPALITY OF INTEREST.
  - (1) TURN TO THE PAGE INDICATED. ON THIS PAGE WILL APPEAR AN INDEX MAP FOR THAT MUNICIPALITY.
  - (2) LOCATE SPECIFIC AREA OF INTEREST AND NOTE THE MAP PAGE NUMBER.
    - NOTE: DO NOT CONFUSE THE MAP PAGE NUMBER WITH THE ATLAS PAGE NUMBER IN THESE MUNICIPALITIES.
  - (3) FOLLOW EITHER ALPHABETICAL OR NUMERICAL SEQUENCE TO THE MAP PAGE INDICATED AND LOCATE SPECIFIC PARCEL OF INTEREST.